



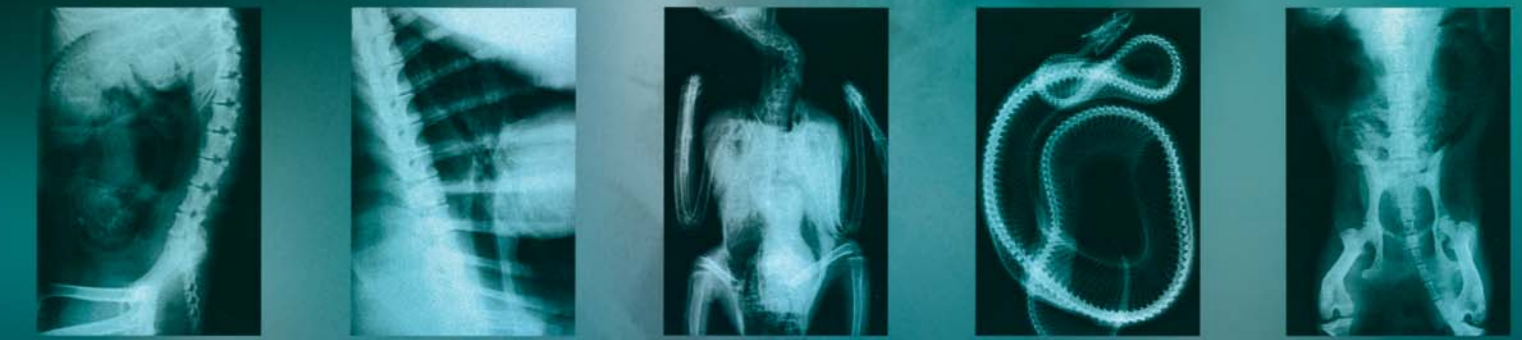
**Touch Screen Operator Console
(integrated in the X-ray unit):**
Color Monitor resolution: 800 x 600

X-ray Image ready in just 6 seconds after X-ray exposure!

No more repetitive exposures! The automatic exposure control combined with the Anatomical Animal Program, always obtaining the ideal image with an alone shot avoids underexposed and overexposed radiographs.



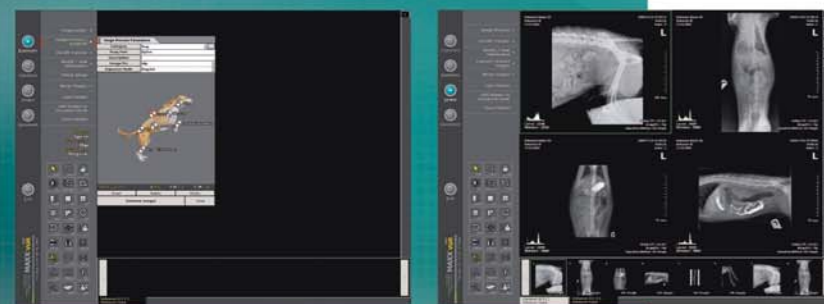
DIGITAL



Digital-Vet System Features



DAILY SCHEDULING
DICOM Work list query allows entry of scheduled patient information before the exam. DICOM Worklist query allows preloading of scheduled patient information. To select a patient name it is only a mouse click away. Patient information can also be entered directly from the workstation.



POSITION - EXPOSURE - X-ray IMAGE IS DISPLAYED
Just 6 Seconds after exposure, the image is ready for viewing on the System Control Station. Here the technologist receives the image and transmits it to designated locations. The available tools for image manipulation and labeling are user friendly.



The most remarkable software tools are:
-Smooth analog ZOOM
-WINDOWS LEVEL/WINDOW WIDTH
-Image CROP
-MAGNIFIER GLASS
-Image INVERTER (negative/positive)
-Image HISTOGRAM
-LINEAR and ANGULAR MEASUREMENT tools
-PATIENT DATA BASE management
-TEXT labeling function
-Rectangular and round SHAPE MARKER
-Image CONVERTER to a different formats (JPEG;

Digital Radiography Advantages



Eliminates the need for x-ray film.
No more repeat films eliminating unnecessary radiation to the patient and the operator.



No cassette handling.



No darkroom required.



No need for a film processor.



INSTANTANEOUS DIAGNOSIS
IMMEDIATE IMAGE on the Monitor- no time wasted in film processing (film developing, fixing, washing, drying, etc.)



Toxic waste is eliminated, developer, fastener, water with residues of silver salts, etc.

It does not require any consumption of water.

No recycling is necessary of residues.

It is fulfilled by the current ENVIRONMENT regulations

Standards Serie UNE-EN ISO 14000

Capable of sending images via electronic transfer.

DICOM compatible.

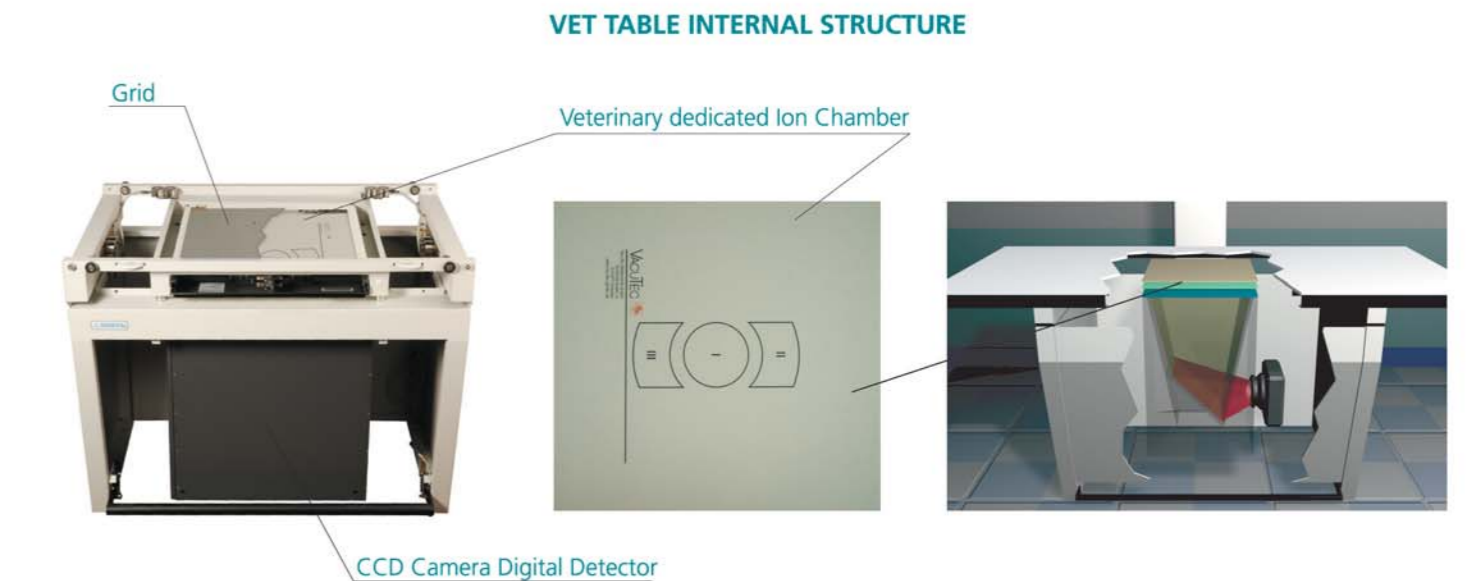
All mentioned advantages translate into enormous savings, both in time and money.



Digital imaging gives you a high quality image for diagnostic purposes with ONE EXPOSURE ONLY.

The wide dynamic range of the digital detector allows the user to modify the level and width of the gray scale window.

System Performance



examinations WITH GRID (for general purpose)

...and WITHOUT GRID, that improves the image quality for the examinations of the animal extremities.



removable grid